

Xiaomi Outdoor Camera AW300 User Manual



Read this manual carefully before use, and retain it for future reference.

Precautions

- The operating temperature range for this camera is -30°C to 60°C. Do not use this camera in environments with temperatures above or below the specified operating range.
- This camera is a precision electronic product that has an IP66 dustproof and waterproof rating. To ensure normal use, do not use the camera in extremely humid environments or locations that may cause water ingress.
- The power adapter that comes along with this product is not waterproof and is only for indoor use. Do not use the power adapter in extremely humid environments or locations that may cause water ingress. The operating temperature range for the power adapter is -30°C to 45°C. Do not use the power adapter in environments with temperatures above or below the specified range.
- Use the original power adapter provided by manufacturer.
- To improve the camera's performance, do not place its lens facing or next to a reflective surface, such as glass windows or white walls, as this will cause the image to appear overly bright in areas close to the camera and darker in areas further away.
- When using Wi-Fi, make sure the camera is installed in an area with a strong Wi-Fi signal. Do not install the camera near microwave ovens and other objects or places that may affect its Wi-Fi signal.
- Keep the camera away from fire or other heat sources.
- When enabling or disabling the night vision of the camera, the infrared cut-off filter will be switched and a slight clicking sound will be made, which is normal.

Product Overview

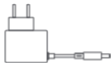
Package Contents



Outdoor
Camera



Mounting
Template Sticker



Power Adapter
(including a 3-meter
power cord)



Attention
Sticker



Wall Plug × 3



Screw × 3



Waterproof
Tape



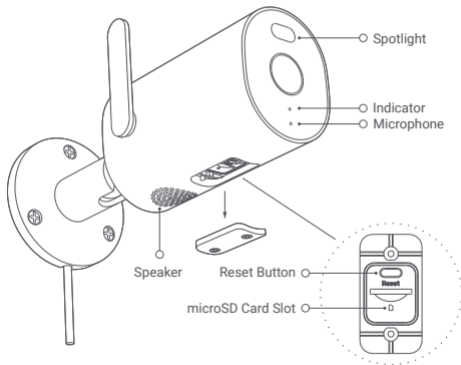
User
Manual



Warranty
Notice

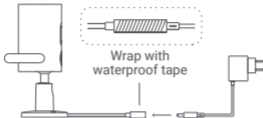
Note: Illustrations of product, accessories, and user interface in the user manual are for reference purposes only. Actual product and functions may vary due to product enhancements.

Xiaomi Outdoor Camera AW300



How to Use

Turning On the Camera Plugging the power cord



Note: After plugging the power cord, please wrap the power port with waterproof tape to avoid water ingress into the port.

Connecting with the Mi Home/Xiaomi Home App

- This product works with the Mi Home/Xiaomi Home app*. Use the Mi Home/Xiaomi Home app to control your device, and to interact with other smart home devices.
- Scan the QR code to download and install the app. You will be directed to the connection setup page if the app is installed already. Or search for "Mi Home/Xiaomi Home" in the app store to download and install it.



992AEC9B

- Open the Mi Home/Xiaomi Home app, tap "+" in the upper right corner of the home page to enter the device adding page, scan the QR code on the

camera, and connect the camera according to the instructions in the app. The indicator remains blue once the camera is successfully connected.

Notes:

- This product only supports 2.4 GHz Wi-Fi networks, 5 GHz Wi-Fi networks are not supported.
- The version of the app might have been updated, please follow the instructions based on the current app version.
- * The app is referred to as Xiaomi Home app in Europe (except for Russia). The name of the app displayed on your device should be taken as the default.

Indicator Status

Awaiting connection: Blinking orange
Connecting: Blinking blue
Connected successfully: Keeping blue

Camera working normally: Keeping blue
Network connection error: Keeping orange
OTA updating: Blinking blue

Installing a microSD Card

1. Remove the protective cover with a screwdriver to expose the microSD card slot and reset button.
2. Insert the microSD card into the card slot with its contact points facing the reset button. Press the microSD card gently until it is secured in the card slot.



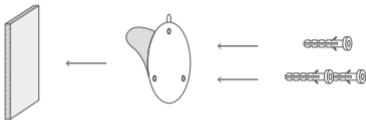
3. After inserting the microSD card, tighten the protective cover with a screw before use to prevent water ingress.

Restoring Factory Settings

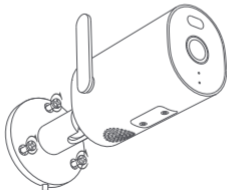
Press and hold the reset button for 10 seconds to restore factory settings.

Installing the Camera

1. Paste the mounting template sticker on a wall at a suitable position.
2. Drill holes on the wall that align with the holes on the mounting template sticker, with a diameter of about 6 mm and a depth of about 35 mm.
3. Install the wall plugs into the drilled holes.



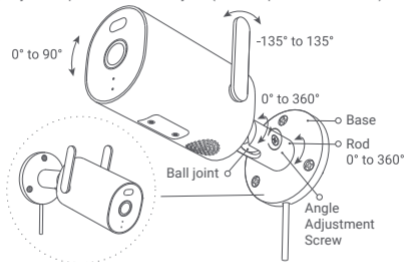
4. Mount the base to the wall with screws.



5. Loosen the angle adjustment screw on the base to adjust the angle of the camera. After the camera is adjusted to the proper angle, re-tighten the angle adjustment screw.

(1) Rotate the adjustable rod (0° – 360° adjustable).

(2) Adjust the position of the ball joint (0° – 360° pan and 0° – 90° tilt).



Notes:

- According to actual needs, the camera antenna angle can be adjusted to obtain a better signal.
- When installing the camera, place the speaker downwards to avoid water accumulation in the sound cavity of the speaker after rainy weather, which might affect the sound effect.
- To avoid water ingress, please tighten the protective cover of the microSD card slot with a screwdriver before use.

Specifications

Name	Xiaomi Outdoor Camera AW300
Model	MBC20
Rated Input	12 V= 1 A
Item Dimensions	173 × 70 × 75 mm
Net Weight	249 g
Field of View (FoV)	101.7°
Resolution	2304 × 1296
Aperture	F2.0
Video Codec	H.265
Night Vision Light	Two 850nm IR light, two LED spotlights
Operating Temperature for Camera	-30°C to 60°C
Operating Temperature for Power Adapter	-30°C to 45°C
Wireless Connectivity	Wi-Fi IEEE 802.11b/g/n 2.4 GHz
Wi-Fi Operation Frequency	2412–2472 MHz
Wi-Fi Maximum Output Power	< 20 dBm
Compatible with	Android 8.0 & iOS 12.0 or above
Storage Function	microSD Card (from 32 GB to 256 GB supported)/cloud storage

WEEE Information



All products bearing this symbol are waste electrical and electronic equipment (WEEE as in directive 2012/19/EU) which should not be mixed with unsorted household waste. Instead, you should protect human health and the environment by handing over your waste equipment to a designated collection point for the recycling of waste electrical and electronic equipment, appointed by the government or local authorities. Correct disposal and recycling will help prevent potential negative consequences to the environment and human health. Please contact the installer or local authorities for more information about the location as well as terms and conditions of such collection points.

CE Information

EU Declaration of Conformity



Hereby, Shanghai Moshon Technology Co., Ltd. declares that the radio equipment type Xiaomi Outdoor Camera AW300 (product name) MBC20 (model) is in compliance with Directive 2014/53/EU. The full text of the EU declaration of conformity is available at the following internet address: <http://www.mi.com/global/service/support/declaration.html>

Under normal use of condition, this equipment should be kept a separation distance of at least 20 cm between the antenna and the body of the user.

Complies with
IMDA Standards
DB106135





CAUTION

Possibly hazardous optical radiation emitted from this product.
Do not stare at operating lamp. May be harmful to the eyes.

Manufactured for: Xiaomi Communications Co., Ltd.

Manufactured by: Shanghai Moshon Technology Co., Ltd.

(a Mi Ecosystem company)

Address: No. 668 Shenzhuan Road, Songjiang Hi-Tech Park,
Caohejing Development Zone, Shanghai, China

For further information, please go to www.mi.com

Importer:

Beryko s.r.o.

Pod Vinicemi 931/2, 301 00 Plzeň

www.beryko.cz